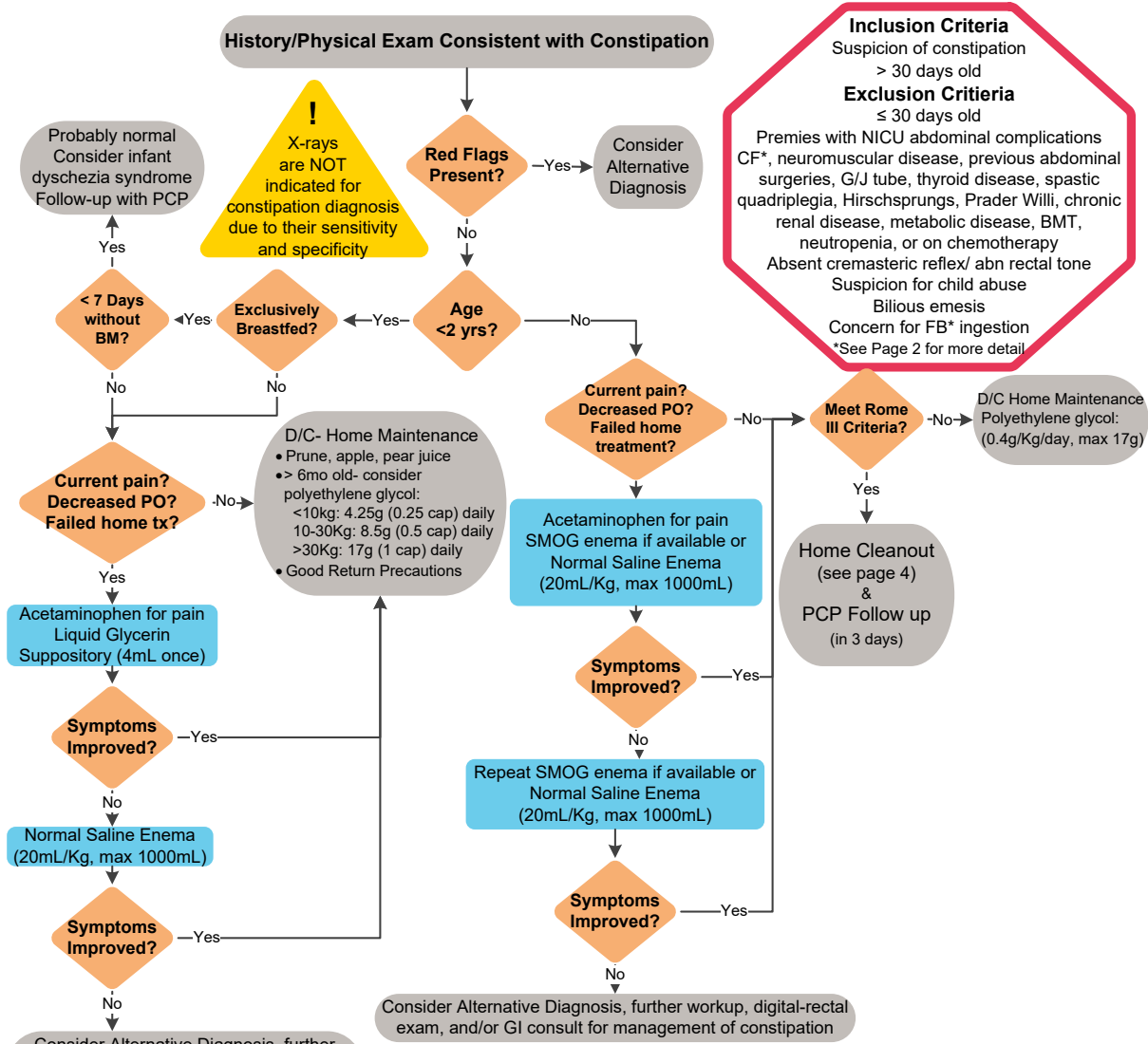


ED/UC Constipation

ALGORITHM



Inclusion Criteria
Suspicion of constipation > 30 days old

Exclusion Criteria
≤ 30 days old

Premies with NICU abdominal complications
CF*, neuromuscular disease, previous abdominal surgeries, G/J tube, thyroid disease, spastic quadriplegia, Hirschsprungs, Prader Willi, chronic renal disease, metabolic disease, BMT, neutropenia, or on chemotherapy
Absent cremasteric reflex/ abn rectal tone
Suspicion for child abuse
Bilious emesis
Concern for FB* ingestion
*See Page 2 for more detail

Red Flags

History

- Meconium not passed in 1st 48 hrs as newborn
- Hx/Family Hx of Hirschsprungs disease or Inflammatory Bowel Disease
- Fever
- Ribbon Stools
- Urinary Retention
- Vomiting

Physical Exam

- Abnormal neuro exam (including rectal exam)
- Sacral dimple or tuft of hair on spine
- Perianal fistula
- Blood in stools in absence of anal fissures
- Severe abdominal distention
- Signs of systemic disease (rash, mouth sores, joint pain, etc.)
- Explosive stool/air with rectal temp, digital exam, etc., may indicate Hirschsprungs

Rome III Criteria¹

In the absence of organic pathology, ≥ 2 of the following must occur

For a child with a developmental age < 4yrs

- ≤ 2 defecations per week
- At least 1 episode of incontinence per week after the acquisition of toileting skills
- History of excessive stool retention
- History of painful or hard bowel movements
- Presence of large fecal mass in the rectum
- History of large-diameter stools that may obstruct the toilet

Accompanying symptoms may include irritability, decreased appetite, and/or early satiety, which may disappear immediately following the passage of a large stool

For a child with a developmental age ≥ 4 years with insufficient criteria for irritable bowel syndrome

- ≤ 2 defecations in the toilet per week
- At least 1 episode of fecal incontinence per week
- History of retentive posturing or excessive volitional stool retention
- History of painful or hard bowel movements
- Presence of a large fecal mass in the rectum
- History of large-diameter stools that may obstruct the toilet

TABLE OF CONTENTS

[Algorithm](#)

[Target Population](#)

[Background | Definitions](#)

[Initial Evaluation](#)

[Clinical Management](#)

[Laboratory Studies | Imaging](#)

[Therapeutics](#)

[Parent | Caregiver Education](#)

[Resources](#)

[References](#)

[Clinical Improvement Team](#)

TARGET POPULATION

Inclusion Criteria

- Clinical suspicion of constipation
- > 30 days old

Exclusion Criteria

- ≤ 30 days old
- Premature infants with NICU abdominal complications
- Cystic Fibrosis (CF), neuromuscular disease, previous abdominal surgeries, G/J tube, thyroid disease, spastic quadriplegia, Hirschsprungs, Prader Willi, chronic renal disease, metabolic disease, bone marrow transplant, neutropenia, or on chemotherapy
- Absent cremasteric reflex/ abnormal rectal tone
- Suspicion for child abuse
- Bilious emesis
- Concern for foreign body ingestion

BACKGROUND | DEFINITIONS

Constipation is defined as infrequent, hard, and painful defecation and can be accompanied by fecal incontinence (S. Mugie, 2011). It can also be accompanied by acute or chronic abdominal pain, gas and bloating. It affects about 30% of children⁴. These patients often seek care in urgent care and emergency department which can result in significant healthcare cost.

Currently the Rome III Criteria is the most commonly used to diagnose Functional constipation⁵ (see algorithm for details).

INITIAL EVALUATION

- History and physical exam should be sufficient to diagnose constipation.
- History should include history of and current stooling habits as well as dietary habits.
- Physical exam should include an external inspection and evaluation for other causes of pain and constipation. Consider a digital rectal exam (DRE) for patients with chronic constipation to evaluate rectal tone, presence of a mass, occult blood, or an anatomic abnormality (ie. anteriorly-placed anus).
- Abdominal radiographs **are not** part of the established diagnostic criteria for constipation. There has been no correlation between findings on an abdominal radiograph and diagnosis of constipation⁶. “Misdiagnosis is more common in children with abdominal pain and tenderness who receive an abdominal xray. Presence of stool on an xray does not rule out other diagnosis”⁷
- Bristol Stool Form Scale ([English](#) and [Spanish](#))

CLINICAL MANAGEMENT

- Acute management of the patient is based on age and symptoms.
- Patients presenting with pain should be treated with acetaminophen (Tylenol) for analgesia and glycerin suppository or saline enema.
- In patients who do not have improvement of pain and/or passage of stool in the ED/UC, other diagnosis should be considered. If leading diagnosis is still constipation, and further ED management is needed, GI should be contacted for recommendations on management.

LABORATORY STUDIES | IMAGING

- Abdominal radiographs are not recommended to evaluate or diagnose constipation.
- There is **no** evidence to support the use of radiograph and further there is no correlation between findings on radiographs and diagnosis or severity of constipation⁹. Radiographs should only be considered if concerned about other causes of abdominal pain (intussusception, bowel obstruction, foreign body).
- Radiographs have a risk of exposure to ionizing radiation. This exposure in the pediatric population can increase risk of certain cancers later in life¹⁰. The Image Gently campaign and the Joint Commission have launched campaigns to reduce unnecessary imaging¹⁰.

THERAPEUTICS

- Acetaminophen for pain. Ibuprofen can be considered if there are not any concerns for other underlying abdominal etiology for pain or dehydration.
- Polyethylene glycol (PEG/Miralax) 0.4g/kg/day Max of 17g for management of constipation.
 - Ensure dilution in adequate amount of liquid (recommended 6-8oz liquid/cap of polyethylene glycol)
- Polyethylene glycol (PEG/Miralax) for home bowel cleanout (see “Home Cleanout” in Parent/Caregiver education below)
- Rectal Liquid Glycerin (Pedialax)- 4mL once for patients <2yrs old
- Normal Saline enema
 - 20ml/kg max 1000ml
- SMOG (Saline, Mineral Oil, Glycerin) Enema
 - Dosing: Under 2 years of age: use not recommended

- Dosing: 2 years to less than 12 years of age: 60ml rectally X1 dose, may administer up to 2 times per day
 - Dosing: Greater than or equal to 12 years of age: 120ml rectally X1 dose, may administer up to 2 times per day
 - SMOG (saline, mineral oil, glycerin) Enema is an extemporaneously compounded product. The ratio of ingredients is 1:1:1; the same volume of each ingredient is present in the final formulation
-
- Fleets enema- there is no evidence that Fleets enemas are superior to normal saline or SMOG enemas and can be more dangerous due to phosphorus content. (Note: should not be used for patients < 2 years old)

PARENT | CAREGIVER EDUCATION

- See Discharge Smartset
- All patient should be instructed to follow up with their PCP
- If polyethylene glycol (PEG/Miralax) is prescribed, parents should receive information on dosing and administration (should be given with increased fluids). Advise parents that not all insurances cover polyethylene glycol (PEG/Miralax) prescription, and product is available over the counter both brand and generic.

Home Cleanout:

Follow these steps until poop (stool) is clear. Do **NOT** follow the bowel cleanout steps for more than 3 days. The goal of a bowel cleanout is to get poop that looks like lemonade (poop looks clear, yellow, without any solid pieces). During the cleanout, your child will drink a solution of **Miralax/Polyethylene glycol (PEG)** that will help wash out the stool AND will also take a medicine called **sennosides (Ex-Lax or Senna)** to help the stool come out.

Diet

- Your child will be on a clear liquid diet during the home cleanout.
- A clear liquid diet means your child should only drink liquids that you can see through if put in a clear glass. Examples are water, Pedialyte, clear apple juice, clear popsicles, clear tea, and sports drinks.
- Once your child's stool (poop) is clear, they may return to a normal diet.

Mixing and Storing the Miralax/Polyethylene glycol (PEG)

- Mix the Miralax: mix the Miralax completely in water or other clear liquid (such as flavored water). There should be no powder visible when it is mixed. The powder is easier to mix with room temperature liquid.
- Store the Miralax: it is easiest to keep the liquid in a large container in the refrigerator. Keeping it cold will make it taste better.

Giving the Medicines

- Give the Miralax to your child throughout the day. Your child does not need to drink the whole amount at one time, it can be split into smaller portions. See amount to give below.
- Give the sennosides (Ex-Lax or Senna) twice a day. Sennosides come in chews, tablets, and liquids. If you are buying them over the counter, pick the product that your child would most easily take.

Dosing of medicines

- If your child is 2-4 years old:
 - **Miralax/Polyethylene glycol 3350 (17g/cap)**
Put 4 capfuls of polyethylene glycol 3350 in 20 ounces of clear liquid and drink over a day
 - **Sennosides (8.6mg)**—other names for this medicine are Senna and Ex-lax
Give 1 tablet of the sennoside by mouth two times per day
- If your child is 5-10 years old:
 - **Miralax/Polyethylene glycol 3350 (17g/cap)**
Put 7 capfuls of polyethylene glycol 3350 in 32 ounces of clear liquid and drink over a day
 - **Sennosides (8.6mg)**—other names for this medicine are Senna and Ex-lax
Give 1.5 tablets of the sennoside by mouth two times per day

- If your child is older than 10 years old:
 - **Miralax**/Polyethylene glycol 3350 (17g/cap)
Put 14 capfuls of polyethylene glycol 3350 in 64 ounces of clear liquid and drink over a day
 - **Sennosides** (8.6mg)—other names for this medicine are Senna and Ex-lax
Give 2 tablets of the sennoside by mouth two times per day

CAUTION, DOSAGE VARIES BY BRAND! Dosage is on the labeling, ask a pharmacist for help if needed

RESOURCES

- <http://www.gikids.org>- Great resource for all GI conditions, including constipation, see “The Poo in You” video (for encopresis) and fact sheets about constipation to hand out to parents

REFERENCES

1. Tabbers MM, DiLorenzo C, Berger MY, et al. Evaluation and treatment of functional constipation in infants and children: Evidence-based recommendations from ESPGHAN and NASPGHAN. *J Pediatr Gastroenterol Nutr.* 2014;58(2):258-274.
<http://proxygw.wrlc.org/login?url=http://search.proquest.com/docview/1492708549?accountid=11243>. doi: <http://dx.doi.org/10.1097/MPG.0000000000000266>.
2. Constipation Guideline Committee of the North American Society for Pediatric Gastroenterology, Hepatology, and Nutrition. Evaluation and treatment of constipation in infants and children: Recommendations of the north american society for pediatric gastroenterology, hepatology and nutrition. *J Pediatr Gastroenterol Nutr.* 2006;43(3):e1-13.
<http://proxygw.wrlc.org/login?url=http://search.proquest.com/docview/68828657?accountid=11243>.
3. Mugie SM, Di Lorenzo C, Benninga MA. Constipation in childhood. *Nature Reviews. Gastroenterology & Hepatology.* 2011;8(9):502-511.
<http://proxygw.wrlc.org/login?url=http://search.proquest.com.proxygw.wrlc.org/docview/1787998439?accountid=11243>. doi: <http://dx.doi.org.proxygw.wrlc.org/10.1038/nrgastro.2011.130>. Sood, M. Constipation in Infants and Children: Evaluation. Up to Date website https://www.uptodate.com/contents/constipation-in-infants-and-childrevaluation?source=search_result&search=constipation%20in%20pediatrics&selectedTitle=2~150. 2017. Accessed February 16, 2017.
4. Burgers R, Levin AD, Di Lorenzo C, Dijkgraaf MGW, Benninga MA. Functional defecation disorders in children: Comparing the rome II with the rome III criteria. *journal of pediatrics.* 2012;161(4):615-620.
<http://proxygw.wrlc.org/login?url=http://search.proquest.com.proxygw.wrlc.org/docview/1663649432?accountid=11243>.
5. Kurowski J, Kaur S, Katsogridakis Y, Wershil BK, Bass LM. Educational module improves emergency department evaluation for suspected constipation. *J Pediatr.* 2015;167(3):706-10.e1.
<http://proxygw.wrlc.org/login?url=http://search.proquest.com.proxygw.wrlc.org/docview/1708900640?accountid=11243>. doi: <http://dx.doi.org.proxygw.wrlc.org/10.1016/j.jpeds.2015.06.009>.
6. Reuchlin-Vroklage L, Bierma-Zeinstra S, Benninga MA, Berger MY. Diagnostic value of abdominal radiography in constipated children: A systematic review. *Arch Pediatr Adolesc Med.* 2005;159(7):671-8.
<http://proxygw.wrlc.org/login?url=http://search.proquest.com.proxygw.wrlc.org/docview/198443452?accountid=11243>.
7. Freedman SB, Thull-Freedman J, Manson D, et al. Pediatric abdominal radiograph use, constipation, and significant misdiagnoses. *J Pediatr.* 2014;164(1):83-88.e2.
<http://proxygw.wrlc.org/login?url=http://search.proquest.com.proxygw.wrlc.org/docview/1490733183?accountid=11243>. doi: <http://dx.doi.org.proxygw.wrlc.org/10.1016/j.jpeds.2013.08.074>.
8. Lewis SJ, Heaton KW. Stool form scale as a useful guide to intestinal transit time. *Scand J Gastroenterol* 1997;32:920-4.
9. Image Gently Alliance. Image Gently website <http://www.imagegently.org>. (2014). Accessed February 26, 2017.
10. Diagnostic Imaging Standards. The Joint Commission website https://www.jointcommission.org/diagnostic_imaging_standards/. July 1, 2015. Retrieved March 15, 2017.


CLINICAL IMPROVEMENT TEAM MEMBERS

Janette Prokop, DNP, CPNP, FNP | Emergency Medicine
Irina Topoz, MD | Emergency Medicine
Michael DiStefano, MD | Emergency Medicine
Joni Mackenzie, PNP | Emergency Department
Kevin Poel, Pharm-D | Pharmacy
Fidelity Dominguez, RN | Emergency Department

Summer Smith, MD | Emergency Medicine
Emily Greenwald, MD | Emergency Medicine
Patrick Burchett, NP | Emergency Medicine
Keith Hazleton, MD | Gastroenterology
Sharisse Arnold-Rehring, MD | Kaiser
Kaylee Wickstrom, RN | Clinical Effectiveness

APPROVED BY

Clinical Care Guideline and Measures Review Committee – 6/13/17
 ED/UC Pathways and Policies Committee - 6/21/17
 Pharmacy & Therapeutics Committee – 8/3/17, 12/5/2019

MANUAL/DEPARTMENT	Clinical Pathways/Quality
ORIGINATION DATE	August 3, 2017
LAST DATE OF REVIEW OR REVISION	August 3, 2017
APPROVED BY	 Lalit Bajaj, MD Medical Director, Clinical Effectiveness

REVIEW | REVISION SCHEDULE

Scheduled for full review on August 3, 2021.

Clinical pathways are intended for informational purposes only. They are current at the date of publication and are reviewed on a regular basis to align with the best available evidence. Some information and links may not be available to external viewers. External viewers are encouraged to consult other available sources if needed to confirm and supplement the content presented in the clinical pathways. Clinical pathways are not intended to take the place of a physician's or other health care provider's advice, and is not intended to diagnose, treat, cure or prevent any disease or other medical condition. The information should not be used in place of a visit, call, consultation or advice of a physician or other health care provider. Furthermore, the information is provided for use solely at your own risk. CHCO accepts no liability for the content, or for the consequences of any actions taken on the basis of the information provided. The information provided to you and the actions taken thereof are provided on an "as is" basis without any warranty of any kind, express or implied, from CHCO. CHCO declares no affiliation, sponsorship, nor any partnerships with any listed organization, or its respective directors, officers, employees, agents, contractors, affiliates, and representatives.

Discrimination is Against the Law. Children's Hospital Colorado complies with applicable Federal civil rights laws and does not discriminate on the basis of race, color, national origin, age, disability, or sex. Children's Hospital Colorado does not exclude people or treat them differently because of race, color, national origin, age, disability, or sex.

Children's Hospital Colorado provides free aids and services to people with disabilities to communicate effectively with us, such as: Qualified sign language interpreters, written information in other formats (large print, audio, accessible electronic formats, other formats). Children's Hospital Colorado provides free language services to people whose primary language is not English, such as: Qualified interpreters, information written in other languages.

If you need these services, contact the Medical Interpreters Department at 720.777.9800.

If you believe that Children's Hospital Colorado has failed to provide these services or discriminated in another way on the basis of race, color, national origin, age, disability, or sex, you can file a grievance with: Corporate Compliance Officer, 13123 E 16th Avenue, B450, Aurora, Colorado 80045, Phone: 720.777.1234, Fax: 720.777.7257, corporate.compliance@childrenscolorado.org. You can file a grievance in person or by mail, fax, or email. If you need help filing a grievance, the Corporate Compliance Officer is available to help you.

You can also file a civil rights complaint with the U.S. Department of Health and Human Services, Office for Civil Rights, electronically through the Office for Civil Rights Complaint Portal, available at ocrportal.hhs.gov/ocr/portal/lobby.jsf, or by mail or phone at: U.S. Department of Health and Human Services 200 Independence Avenue, SW Room 509F, HHH Building Washington, D.C. 20201 1-800-368-1019, 800-537-7697 (TDD) Complaint forms are available at www.hhs.gov/ocr/office/file/index.html.

Children's Hospital Colorado complies with applicable Federal civil rights laws and does not discriminate on the basis of race, color, national origin, age, disability, or sex.

ATENCIÓN: si habla español, tiene a su disposición servicios gratuitos de asistencia lingüística. Llame al 1-720-777-9800.

CHÚ Ý: Nếu bạn nói Tiếng Việt, có các dịch vụ hỗ trợ ngôn ngữ miễn phí dành cho bạn. Gọi số 1-720-777-9800.

주의: 한국어를 사용하시는 경우, 언어 지원 서비스를 무료로 이용하실 수 있습니다. 1-720-777-9800 번으로 전화해 주십시오.

注意: 如果您使用繁體中文, 您可以免費獲得語言援助服務。請致電1-720-777-9800。

ВНИМАНИЕ: Если вы говорите на русском языке, то вам доступны бесплатные услуги перевода. Звоните 1-720-777-9800.

ማስታወሻ: የሚናገሩት ቋንቋ ካማርኛ ከሆነ የትርጉም አርዳታ ድርጅቶቻችን በነጻ ሊያግዝዎት ተዘጋጅተዋል። ወደ ሚከተለው ቁጥር ይደውሉ 1-720-777-9800 (መስማት ስተሳናቸው።)

ملحوظة: إذا كنت تتحدث اذكر اللغة، فإن خدمات المساعدة اللغوية تتوافر لك بالمجان. اتصل برقم 1-720-777-9800.

ACHTUNG: Wenn Sie Deutsch sprechen, stehen Ihnen kostenlos sprachliche Hilfsdienstleistungen zur Verfügung. Rufnummer: 1-720-777-9800.

ATTENTION : Si vous parlez français, des services d'aide linguistique vous sont proposés gratuitement. Appelez le 1-720-777-9800.

ध्यान दनु होस् तपाइले नेपाल बोल्नुहुन्छ भने तपाइको निम्त भाषा सहायता सवाहू नःशुल्क रूपमा उपलब्ध छ । फोन गर्नु होस् 1-720-777-9800 ।

PAUNAWA: Kung nagsasalita ka ng Tagalog, maaari kang gumamit ng mga serbisyo ng tulong sa wika nang walang bayad. Tumawag sa 1-720-777-9800.

注意事項: 日本語を話される場合、無料の言語支援をご利用いただけます。1-720-777-9800 まで、お電話にてご連絡ください。

Nti: O buru na asu lbo, asusu aka oasu n'efu, defu, aka. Call 1-720-777-9800.